

Symptoms produced by various viruses on watermelon

Akhtar Ali

Assistant Professor, Department of Biological Science

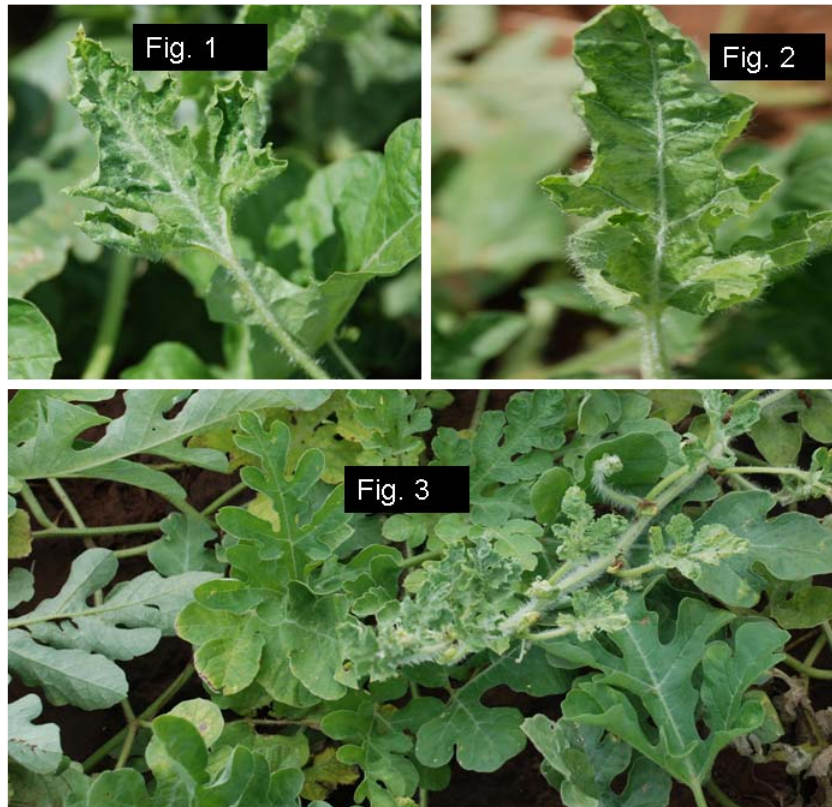
The University of Tulsa, Oklahoma, 74104

Tel: 918-631-2018, Fax: 918-631-2762

Email: Akhtar-ali@utulsa.edu

The following symptoms were produced by different viruses in watermelon fields located in southern states and were photographed during surveys in 2010 and 2011 growing seasons. These symptoms will help the growers to differentiate a virus disease in a watermelon field but will not be able to identify a particular virus. To further confirm the identity of a particular virus, the grower needs to send the samples to Dr. Ali's Lab. Special instructions for collection and mailing the samples can be obtained from Dr. Ali by email.

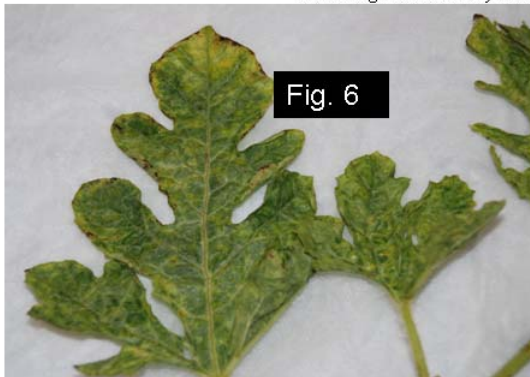
Mosaic, blistering, puckering and chlorosis caused by *Papaya ringspot virus-W* (PRSV-W)



Leaf deformation, mottling and shoe strings by PRSV-W and *Watermelon mosaic virus* (WMV)



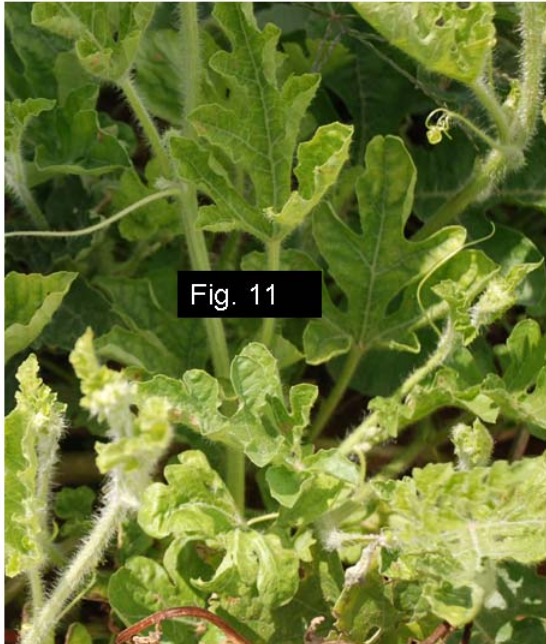
Yellowing and mosaic by *Zucchini yellow mosaic virus* (ZYMV)



Mosaic, ring spots and distortion by *Tobacco ringspot virus* (TRSV)



Fig. 10. Mosaic, mottling and leaf curling by Squash leaf curl virus (SLCV), Fig. 11. Mild mosaic and chlorosis by Squash mosaic virus (SqMV)



Severe mosaic and leaf narrowing by (WMV)



Fig. 14. Severe mosaic, blistering, stunting, and mild mosaic and (Fig. 15) interveinal chlorosis caused by unknown viruses



Fig. 16. Severe mottling, leaf deformation, and (Fig. 17) severe mosaic, and chlorosis caused by unknown viruses



Fig. 18. Severe mottling, and yellowing, and (Fig. 19) severe mosaic, and interveinal chlorosis by unknown viruses



Fig. 20. Mottling, mosaic and yellowing at the leaf tip, and (Fig. 21) leaf narrowing, and mild mosaic by unknown viruses

